

## Planning your visit...

### Admission

There is no fee to visit the Alviso Adobe Community Park. There may be fees associated with programs or workshops provided by the City of Pleasanton either on or off site.

### Hours

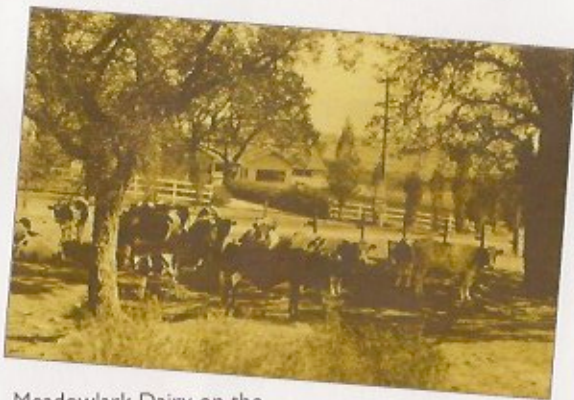
The Park is open daily from dawn to dusk. The park buildings are open for self-guided tours Wednesday through Sunday 10am to 4pm. The Park Buildings are closed Mondays, Tuesdays, and City Holidays.

### Special Events & Programs

For more information on participating in special events, educational programs, or school programs at the Alviso Adobe Community Park, please contact: 925-931-3479 or visit: [www.ci.pleasanton.ca.us/services/recreation/html](http://www.ci.pleasanton.ca.us/services/recreation/html)

### Volunteering

For more information on Alviso Adobe Junior and Adult Volunteer opportunities, please contact 925-931-3479 or visit: [www.helplendahand.org](http://www.helplendahand.org).



Meadowlark Dairy on the Alviso Adobe site, 1930s.

## Getting there...

### Address

3465 Old Foothill Road  
Pleasanton, CA 94588

**Information:** 925-931-3479

### Directions

*From Dublin, San Ramon, and Walnut Creek:*

Take 680 South

Take the Bernal Ave exit (Exit 26)

Turn Left at light onto Bernal Ave

Turn Right at Foothill Road

Alviso Adobe Community Park is on the left

*From Sunol and San Jose:*

Take 680 North

Take the Bernal Ave exit (Exit 26)

Turn Left at light onto Bernal Ave

Turn Right at Foothill Road

Alviso Adobe Community Park is on the left

*From Livermore and Tracy:*

Take 580 West

Merge onto 680 South

Take the Bernal Ave exit (Exit 26)

Turn Left at light onto Bernal Ave

Turn Right at Foothill Road

Alviso Adobe Community Park is on the left

*From Oakland and Castro Valley:*

Take 580 East

Merge onto 680 South

Take the Bernal Ave exit (Exit 26)

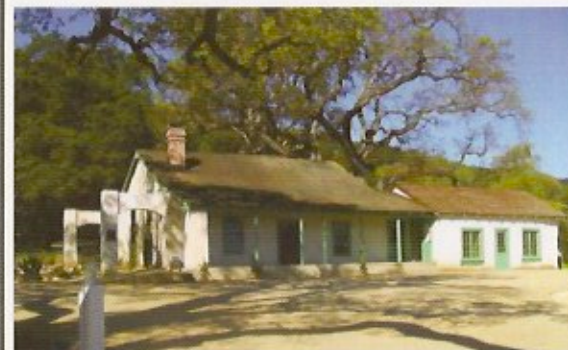
Turn Left at light onto Bernal Ave

Turn Right at Foothill Road

Alviso Adobe Community Park is on the left



## ALVISO ADOBE COMMUNITY PARK



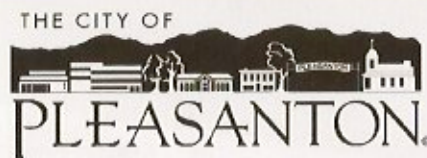
## Learn Explore Discover

Park Hours: Daily from dawn to dusk

Park Buildings Open:

10am to 4pm, Wednesday-Sunday

Closed Mondays, Tuesdays & City Holidays



## About the Park...

### A Historical Landmark

Pleasanton's Alviso Adobe Community Park is a unique historical landmark that tells the story of California from its earliest human occupation, dating back to 3420 B.C. through the Spanish and Mexican Eras, and into the agricultural/dairy period of the 20th Century.

### Restoration

Recent work on the site included the restoration of the historic Alviso Adobe, one of the first buildings in the Amador Valley, State Historical Landmark No. 510. The restoration also included the re-creation of the Meadowlark Dairy, including the Milking Barn and Bunkhouse. In addition to the spectacular valley views, features of the site include the foundation of the Dairy Managers house and the site of the Dairy Silo.



Kroeger Family at Alviso Adobe home in the 1900s.

## Site Features...

### Native American (Ohlone) Grinding Stone

Use of the site by the Ohlone people dates back to 3420 B.C. It was likely used as a ceremonial point between a small settlement of Ohlone people and a burial site. Here a large stone was used to grind or mash medicinal and ceremonial plants or other organic materials.

### Francisco Alviso Adobe House

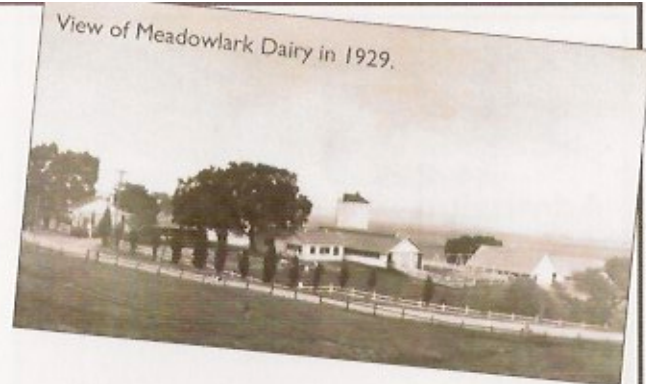
Noted as State Historical Landmark No. 510, the Alviso Adobe House was one of the first buildings in the Amador-Livermore Valley and is notable as one of the few remaining adobes in Northern California. The building was constructed in 1854 by Francisco Alviso, a rancher. The Adobe House is staged with furniture and artifacts dating to the 1920 period of occupation.

### Meadowlark Dairy Milking Barn & Bunkhouse

From 1919 to 1969, the Meadowlark Dairy occupied the site with a large Milking Barn for milking dairy cows and a Bunkhouse for workers. The buildings are both re-creations of the two dairy buildings which were on site until Meadowlark Dairy moved in 1969.

### Dairy Manager's House Foundation

The low boundary walls to the north of the adobe structure show the approximate location of the Meadowlark Dairy Manager's House.



### Meadowlark Dairy Silo

To the east side of the Milking Barn lies a circular paving design indicating the original location of the Meadowlark Dairy Silo. The original silo was roughly 45 feet high and held feed for the dairy animals.



**Visit Fiona** an educational milking cow residing at Alviso Adobe.

Milk Fiona weekly on Saturdays from 10am-11am.

## Site Timeline...

- 3420 B.C. Native American (Ohlone) occupation
- 1797 A.D. Mission San Jose established (in Fremont)
- 1839 Santa Rita Rancho Land Grant
- 1854 Alviso Adobe built
- 1881 Water Company Ownership & Tenant Farmers
- 1919 Meadowlark Dairy opens
- 1969 Meadowlark Dairy closes
- 1993 City of Pleasanton acquires land
- 2008 Alviso Adobe Community Park opens

## What You Can Do to Support Alviso Adobe Community Park

Volunteer at the Park!

Just contact the staff; they will be happy to have you join them.

You, family & friends, participate in the park's wonderful programs.

All information for the park is in the Community Services Dept. Activity Guide.

Join With Friends of the Alviso Adobe;  
Become an Alviso Adobe Park advocate.

No dues

Few meetings

Lots of email contact

Do as little or as much as you want – all levels of support welcomed

Contact:

Dolores Bengtson

grannydolo@comcast.net

925-846-4865

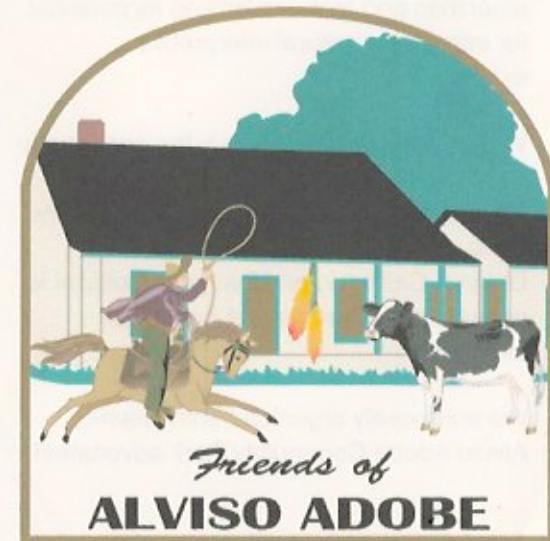


## Site History

- 3240 B.C.** Native American Occupation
- 1797** Mission San Jose Established
- 1839** Santa Rita Rancho Land Grant
- 1854** Francisco Alviso built Alviso Adobe
- 1881** Water Company Ownership and Tenant Farmers
- 1919** Meadowlark Dairy Opens and major remodeling of Alviso Adobe
- 1969** Meadowlark Dairy Closes Pleasanton facility
- 1993** City of Pleasanton Acquires site
- 1995** Preservation & Stabilization Plan for the Adobe Completed
- 1996** Stabilization Completed
- 2008** Final Project Completed; Alviso Adobe community Park Opens

## Alviso Adobe Community Park

# Friends of the Alviso Adobe (FAA)



January 2014

## Who are Friends of the Alviso Adobe?

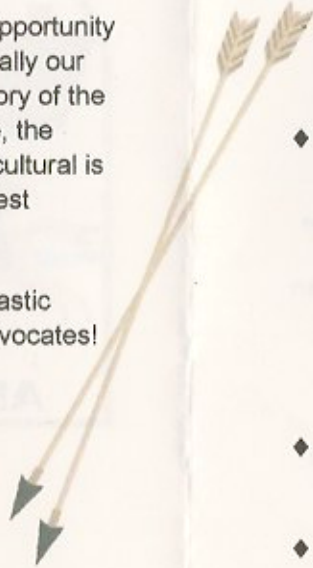
We are citizens, young and old, who volunteer at the park and support its excellent programs and staff;

We are citizens who have served in the past to preserve this important resource and develop the site for the community;

We are citizens who believe the park lacks amenities and features limiting its potential for interactive cultural interpretive experiences;

We are citizens who believe the opportunity to educate the community, especially our youth, by interpreting the rich history of the three eras represented on the site, the Ohlone, Californio and Dairy/Agricultural is unique, most deserving of our fullest attention;

We are loosely organized enthusiastic Alviso Adobe Community Park advocates!



## Friends of the Alviso Adobe A Glimpse of Our Vision

The park is a beautiful park just waiting for additions and improvements that will allow it to be a park young and old will return to again and again. Our vision is a park alive, interactive, with things to do and experience all the time.

### We support:

- ◆ Integrating the entire park into the program. Add an interactive Ohlone home Site, a large kitchen garden, an outdoor CA era kitchen, a CA era ranch activity area, enhanced orchards and growing areas, pens and sites for seasonal animal displays.
- ◆ The addition of a full service kitchen and well designed classroom in the Milkbarn. The kitchen will facilitate dual use and promote many programs related to food preparation/processing for the three eras. The full kitchen will also support craft activities and improve social use options.
- ◆ The addition of substantial inside and outside storage.
- ◆ The use of modern interactive exhibit strategies to assure the interest and involvement of students and visitors.

## Friends of the Alviso Adobe Support the Following Actions to Achieve Vision

1. Approve and complete a Study or Strategic Plan to serve as a framework for improving the park and making it all that it can be.
2. Development of the Plan to assure it meets staff's, community, and stakeholder's goals.
3. Approve funding to implement the Plan.
4. Implementation of the Plan.

