

ISSN 0736-802X

# *The Livermore Roots Tracer*



*Livermore-Amador Genealogical Society*

P.O. Box 901, Livermore, California 94551-0901

<http://l-ags.org> & <http://facebook.com/Livermore.Amador.Genealogical.Society/>

# Membership Report

4<sup>th</sup> Q 2020

## Patrons

Anonymous, Lois Barber, Susan Davis, Richard and Jean Lerche,  
Thomas and Natasha Mathews, and Duncan Tanner

## Benefactors

Kristina Ahuja, Matthew Berry, Annette Breingan, Linda Driver and Walt Crawford, Gail  
Fairfield, Richard and Wanda Finn, Marilyn Glass, Barbara Hemphill, Cindy McKenna,  
Pamela Miller, Ileen J. Peterson, Peggy Weber and Bob Whitlock,

## L-AGS Members

98 active memberships and 112 members

## Meeting News

All face to face meetings are suspended indefinitely due to Coronavirus-19.

**General Meetings** — Are usually held on the second Monday of the month at 7:30 p.m. at Congregation Beth Emek, 3400 Nevada Court, Pleasanton. Map: <http://www.L-AGS.org/maps/Pls-BethEmek.html>

**The L-AGS Writing Group** — Due to Coronavirus-19 meetings are weekly on Sunday afternoon via Zoom. The encouragement to write your ancestors' stories and your own comes from this enthusiastic group. To join the email list, please send a note to <mailto:changes@L-AGS.org> with "Add me to the Writing Group list" in the subject line.

**Let's Talk Genealogy** — Due to Coronavirus-19 meetings are weekly on Sunday afternoon via

Zoom. To join the email list, please send a note to <mailto:changes@L-AGS.org> with "Add me to the Let's Talk Genealogy list" in the subject line.

**The Master Genealogist Group** — Due to Coronavirus-19 meetings are via Join.me on the third Saturday of the month, from 9 a.m. to 12 noon. Location: Contact TV-TMG Chair (Duncan Tanner) [tvmtg.chair@L-AGS.org](mailto:tvmtg.chair@L-AGS.org); TV-TMG Forum [tvmtg.group@L-AGS.org](mailto:tvmtg.group@L-AGS.org)

**Pleasanton Genealogy Center** — is jointly supported by L-AGS, the Friends of the Pleasanton Library, and the Pleasanton Public Library. A L-AGS genealogy docent will be available by appointment, Wednesdays from 10:00 a.m. to 1:00 p.m. at the Pleasanton Public Library, 400 Old Bernal Avenue Pleasanton, California, request a mutually agreeable appointment via e-mail: [docents.chair@L-AGS.org](mailto:docents.chair@L-AGS.org)

## L-AGS Leadership for 2020

President	<a href="mailto:president@L-AGS.org">president@L-AGS.org</a>	Julie Liu
VP/Program Chair	<a href="mailto:program@L-AGS.org">program@L-AGS.org</a>	Tom Mathews
VP/Membership Chair	<a href="mailto:membership@L-AGS.org">membership@L-AGS.org</a>	Denise Barr
Corresponding Secretary		Marilyn Glass
Recording Secretary		Susan Davis
Business Manager	<a href="mailto:business.manager@L-AGS.org">business.manager@L-AGS.org</a>	Duncan Tanner

## Contents

Membership and Meeting News.....	2	In Memoriam: Dr. Richard D. Johnson .....	7
L-AGS Leadership for 2020 .....	2	Finding My Rudolph Roots.....	8
President's Message from Julie Liu .....	3	The Missing Monument .....	11
My High School Days in Narimasu, Japan, 1947-1949 .....	4	Who Were These Business People? .....	14
		Catching the Genealogy "Bug" .....	15
		Future General Meetings .....	16

## President's Message

So what has the Livermore-Amador Genealogical Society been doing?

Some of us have been busy writing articles to submit to the Roots Tracer. All of us have been socially distanced from each other. Many of us are much better with Zoom than when this pandemic started. The good news is the vaccine is on the horizon but realistically according to current news reports it may take the remaining year to get the Covid virus under control. With that in mind, the board has agreed that we will continue our virtual meetings through this year 2021. With all this in mind, Tom Mathews, program coordinator, has been busy booking speakers for our meetings. The plus side of virtual meetings is that we can book a wider variety of speakers from all over the country. So far, we have had a speaker from upstate New York, SoCal, Lodi, and Oregon even speakers that are local are happy that they are not facing the challenges of our NorCal commute traffic.

Some of the feedback that I have received from the speakers that have presented is that our group is so warm and welcoming. I have to agree. This is a great group to be a part of.

### Our new slate of officers was elected at our December 14<sup>th</sup> meeting.

Julie Liu – President	Sue Davis – Recording Secretary
Tom Mathews – 1 <sup>st</sup> VP (Programs)	Marilyn Glass – Recording Secretary
Denise Barr – 2 <sup>nd</sup> VP (Membership)	Duncan Tanner – Business Manager

Corresponding Secretary is Ken Bredlau. Ken stepped forward and was a valuable member of our board for the last 2 years. I wish to thank Ken for his participation over the last two years. Marilyn Glass put her hand up to assume Corresponding Secretary since Ken was officially termed out. Some of you may remember that Marilyn was program co-coordinator 4 or 5 years ago. I look forward to working with Marilyn as our newest board member. Several of us, Tom, Sue and I also termed out but since there were no replacements, you get us.

### A Bright Idea

After Linda Harms Okasaki presented our December lecture “West Coast Immigration in the 20<sup>th</sup> Century,” she pointed out how numerous historical events may affect our ancestors and create a more vibrant color of what their lives were like. Following that bit of inspiration, I found this really cool website <https://www.historyplace.com/specials/calendar/>. It includes some fairly current events but it also includes a lot of historical events listed month by month. I anticipate using this type of site for births, marriages or deaths, and migration events. It would provide a little bit more color to any story you write or tell. It could also add some interest in your next Roots Tracer article.

### Pleasanton Library availability for on-line research

Nancy Bering and Judy Person, Board Members with Friends of the Pleasanton Library, informed L-AGS that Friends of the Pleasanton Library is footing the bill for Fold3.com, along with Ancestry for Libraries and Heritage Quest. ProQuest has authorized libraries nationwide to permit access from home

*President's Message  
Continued on Page 10*

---

### The Livermore Roots Tracer

*The Roots Tracer* is the quarterly publication of the Livermore-Amador Genealogical Society. The mission statement of the Roots Tracer is: “**Instruct. Inspire. Inform.**”

We encourage members to submit articles for publication. Material can be e-mailed to: [rootstracer.chair@L-AGS.org](mailto:rootstracer.chair@L-AGS.org) or mailed to L-AGS, P.O. Box 901, Livermore, CA 94551-0901. Want ghostwriting help? Just ask!

### The Roots Tracer Staff

**Editor**..... Patrick Lofft  
**Contributors**..... Marilyn Felton Cutting,  
 ..... Richard W. Finn, Caye Johnson,  
 ..... Shirley Siems Terry, Andi Winters  
**Composer**..... Andi Winters  
**Printing and Distribution**..... Sue Davis,  
 ..... Jean Lerche

## My High School Days in Narimasu, Japan in 1947-1949

By Richard Damerou Johnson

*Prologue: By Caye Johnson*

Richard Damerou Johnson attended Narimasu High School in post WWII occupied Japan when he was a freshman and sophomore. He, his mother, Merlie Margaret Damerou Johnson, and his younger brother, Roger Nylund Johnson, took an old army troop train, probably from Chicago as they lived in Whitefish Bay, Milwaukee Co., a suburb of Milwaukee, Wisconsin to California where they waited to embark the troop transport ship, the USAT Edwin D. Patrick,<sup>1</sup> in San Francisco. Richard was apprehensive about crossing the Pacific Ocean until he saw the size of the ship. His apprehension was warranted as he was seasick for five days.

One night there was a terrible storm and he could hear the dishes crashing in the kitchen. The next morning they were told that they had gone through the tail end of a typhoon, but after that it

was smooth sailing to the 8<sup>th</sup> Army docks in Yokohama where his father, Earl Gladstone Johnson, was waiting.

The following is what he wrote about that early experience after he returned from a Sloan School field trip to Japan in 1982. He loved to tell the family about his "radio" experience.

When I arrived at Narimasu High School in Grant Heights,<sup>2</sup> I don't remember knowing that this was a brand new high school. For me as a freshman, it all was new. I remember little about the teachers

<sup>1</sup>USAT General Edwin D. Patrick (1946 - 1950) <https://www.navysource.org/archives/09/22/22124.htm>

<sup>2</sup>On the 16th of February 1948, Tokyo American High School, Narimasu was opened at Grant Heights Housing Area. It provided schooling for students 7th through 12th Grades who lived in the Tokyo metropolitan area. There were 201 students enrolled. A new housing area, Mutsumi Dai was built next to Grant Heights.



*Housing in Grant Heights, Tokyo*

or classes. It was school, an American school. Outside was Grant Heights, which definitely tried to be like America, but it took one trip on the local bus to learn “choto matte”<sup>3</sup> and know it was different.

My father was not in the military, so this was a new experience also. I do not know how many of us were “civilian”, how many military—dare I say “brats.” I couldn’t discern the difference. The Korean War started during this year and a deep impression was made when one or two of the students bravely but cautiously announced, “My dad is flying today out of Tachikawa.”<sup>4</sup> It felt like other days in other schools when a friend announced “my dad died of a heart attack last night.” I always will remember both.

But my dad was a civilian on Gen. MacArthur’s vast staff advising the Ministry of Agriculture on how to get more yield from the farms, mostly in improving irrigation and drainage. But we lived in a military village, went to the PX and commissary like anyone else, etc. We melded in.

Actually, my mother was the high school librarian so we “commuted” together across the runway strip to the school. But I made sure to not make all that public.

<sup>3</sup>The way you say “wait” in Japanese is Matte. The more formal form of the word is “Chotto matte kudasai.” Chotto means “a small amount/degree,” and kudasai means “please.”

<sup>4</sup>Tachikawa Airfield, is an airfield in the city of Tachikawa, the western part of Tokyo, Japan.



*Richard and Roger scaling Mt. Fuji*

I remember sitting in the class rooms with slightly creaky wooden floors. Not terribly well lit as I remember. We had fairly frequent earthquakes, perhaps monthly. The place really rattled. It did not take long for us kids to learn that if while sitting at the desks one could raise on heels, press down with ones toes, and wiggle our feet. Make a great simulated earthquake. And something to drive certain teachers nuts.

I fit into the more nerdy crowd. There were several of us got interested in radios. One of us had experience and built small receivers that could be tuned to the ordinary AM band. These radios could send or receive, and we all had microphones and earphones. We would go to the Ginza and buy junk radio parts. Some of us had phonographs and could play records. Which is what we did every afternoon after school. This was a 1948, mini “internet” with equivalents of Twitter and Facebook. Great fun that kept us out of trouble.

One day, a Saturday, probably in 1949, some of us were at one guy’s house. We were chatting away when one guy on the other end started using our names. We said “no, shouldn’t use names.” The other guy said, “everyone knows you are Bill Steg, and your father is Principal of the High School”. Bill came back with “we better shut it down, come on over, we’ll play some basketball.” Which is what we did. But ... about 20 minutes later a small convoy of cars pulled up. The last car was a black Buick with a large whip antenna. A full Colonel jumped out and said “I am General MacArthur’s Signal Officer. Do you boys have any radios? We just sent some men to Sugamo Prison<sup>5</sup> for five years. Etc. We were impressed and really did stop.

Another aspect of life was Boy Scouts. A lot of guys from school were in the troop, and some Juniors and Seniors were the scout leaders. But the good part, was that we had a sponsor, The First Calvary Division. When we went camping, we would assemble somewhere in Grant Heights and along would come the 1<sup>st</sup> Cav. Five “2x4” trucks with canvas covers over the back. Of course our gear was army gear—woolen sleeping bags were soon replaced by airforce artic bags from Alaska. Most of us rode on the benches but a few got to sit with the driver and fly our troop flags on long poles. Bringing up the rear was our mobile kitchen, our chow. We went down the road like any other convoy. Great way to impress

<b>Johnson Lineage Chart</b>	
Aaron Bartemus Johnson b. 7 Apr 1868, Chicago, Illinois d. 14 Dec 1952, Scandia, Kansas m. 15 Apr 1888, Oberlin, Kansas Hannah Nylund b. 8 Nov 1864, Orebro, Sweden d. 18 Sep 1947, Scandia, Kansas	Wilhelm Herman Damerau b. 15 Dec 1871, East Prussia d. 2 Sep 1953, Waupun, Wisconsin m. 1899, Wisconsin Frederika Uecker b. 10 Jul 1863, Alto Township, Wisconsin d. 25 Jan 1947, Brandon, Wisconsin
Earl Gladstone Johnson b. 3 Sept 1902, Scandia, Kansas d. 9 Jan 1992, New Canaan, Connecticut m. 22 Jun 1932, Bradon, Wisconsin Merlie Margaret Damerau b. 28 Apr 1905, Fairwater, Wisconsin d. 24 Jul 1992, Norwalk, Connecticut	
Richard Damerau Johnson b. 28 Oct 1934, Zanesville, Ohio d. 26 Nov 2020, Pleasanton, California m. 30 Dec 1969, San Jose, California Catherine Harriet Collins	Roger Nylund Johnson m. Loraine Dyson

a 15 year old. We went on all kinds of trips from a weekend to two weeks up at the base of Mt. Fuji. Those adventures, involving many of the “doers” from school, form my best memories of Narimasu days.

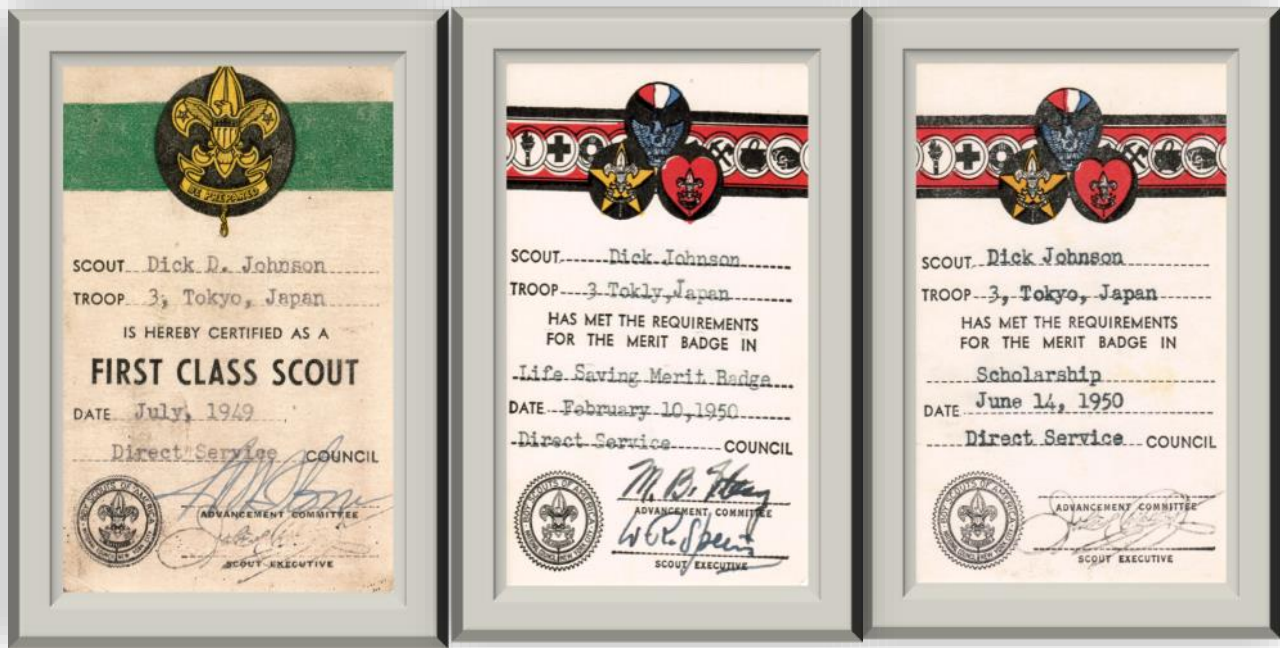
The unique feature of our life there resulted from my father’s job. Which took him to every prefecture of Japan. Often, the whole family would go and we would be guests of the Governor of the Prefecture. There I say the “real” Japan; rural, and preserving of the beauty of nature and dignity of the old traditions and temples.

*Epilogue: By Caye Johnson*

*As mentioned above, Richard was involved with the boy scouts and his brother, Roger, with cub scouts. Their sponsor was the First Calvary Division stationed at nearby Camp Drake<sup>6</sup> where the two of them would ride horses, including General*

<sup>5</sup>Sugamo Prison was located in the district of Ikebukuro, which is now part of the Toshima ward of Tokyo, Japan.

<sup>6</sup>Camp Drake was one of 20 military installations around the Tokyo area. <http://www.seans.com/sunsetweb/japan/j55-1/>



July 1949 First Class Scout

Feb 1950 Life Saving Merit Badge

June 1950 Scholarship Merit Badge

Tojo's<sup>7</sup> great white stallion. Richard climbed Mt. Fuji twice and on page 5 is a photo of him and Roger with their stamped walking sticks at the summit of Mt. Fuji in 1949. The family lived at Grant Heights, an army housing area 12 miles outside of Tokyo located on a former Japanese Air Force Base. On page 4 is a picture of their house, one of 1,200 on the base, with their two Japanese

maids. The house came with two young maids, but when one of them took an interest in Richard, his mother fired them and hired older maids. Richard spoke very highly of his Boy Scout days. Above are a few of the merit badges that he earned.

<sup>7</sup>General Hideki Tojo was a general of the Imperial Japanese Army and was executed in 1948 for war crimes.

## In Memoriam Dr. Richard D. Johnson

Dr. Richard D. Johnson, husband of L-AGS member, Caye Johnson, and resident of Pleasanton, CA, passed away on Nov. 26, 2020 at the age of 86. He was born in Zanesville, OH but grew up in Whitefish Bay, WI. He attended the American University in Cairo, Egypt and the Sorbonne in Paris, France before transferring to Oberlin College where he received his A.B. in Chemistry in 1956; earned an M.S. and Ph.D. from Carnegie-Mellon in 1960 and 1962; and did a Post-Doc at UCLA in 1963. After a brief stint at the Jet Propulsion Laboratory, Richard was invited to join NASA at the Ames Research Center in Mountain View, CA where he worked from 1964 to 1985. With his wife of 50 years Caye, he shared a love of genealogy and the two traveled

throughout the US and Europe meeting distant relatives, and seeing the farms, ranches, and towns their ancestors called home.

Richard is survived by his wife, Caye (Collins), brother Roger (Lori Dyson), his children, Lauri (Mike LaFave), Millicent (deceased), Karen (Kevin McHugh), Eric (Stephanie Pascal), and Gregory (Christine Mullen), his four grandchildren, Ailea (Jeremy Clarkson), Annika, Sascha, Ian, and Persephone, his two great-grandchildren Emmitt and Logan, and his two nieces, Allison (Doug Crawford) and Erika (Greg Story).

*Published in San Jose Mercury News/San Mateo County Times on Dec. 6, 2020*

## Finding My Rudolph Roots

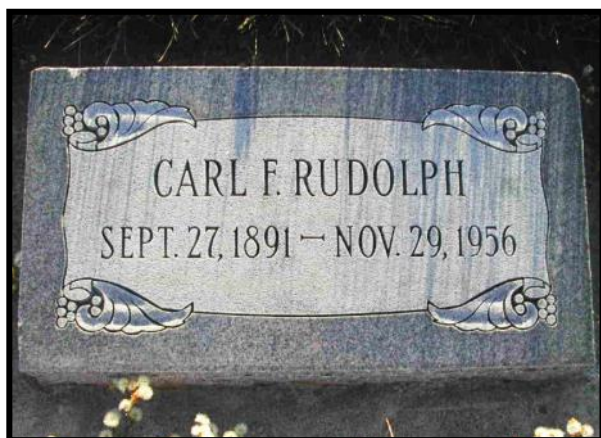
By Andi Winters

My husband Greg and I enjoy road trips, staying at a vacation rental for a week or so and exploring the new area of the country we landed in. This year, after arriving in Bozeman, Gallatin, Montana on Monday, September 14, 2020 Greg and I were still surrounded by the smoky skies that had followed us from our home in Redding, Shasta, California. Unable to be out hiking or biking I dove back into my family genealogy. Although I had done very little with my mother's maternal side of the Rudolph family, I remembered that my great-grandparents lived in Idaho during the late 1800s. My research showed that they were buried in Teton, Idaho, which much to my surprise was just three hours from where we were staying.

What an unexpected adventure we were about to experience.

We decided we would take a ride to Teton, check out the cemetery or cemeteries then go to Yellowstone and watch Old Faithful erupt. I checked with the county clerk in Teton and he gave me the phone number and email address of a lady who might have some information about the cemetery. After leaving a message she returned my call and let me know the cemetery was open. She also gave me a phone number of a person who might be able to help if we ran into a problem.

On Friday, September 18 we took off and got to the Haden/Hayden<sup>1</sup> Cemetery outside Teton about 2:00 pm. We only found the headstones for my two great-uncles Carl and Otto Ru-



*Carl F. Rudolph (1891-1956)*

dolph.<sup>2</sup>

I checked on my iPad and learned that my great-grandparents were actually buried in the Rudolph Family Cemetery. I called the phone of the person given to me yesterday. It was an elderly man, Dale Breckinridge, who knew of the cemetery but, because a bridge was being reconstructed along the way it was complicated to get there. We followed his directions and stopped at a farm house along the way as he suggested to get more directions. The young man living there didn't know anything as he was new to the area.

We decided that it might be best to go to the county courthouse in nearby Driggs. We learned that Teton County wasn't formed until 1915 so that didn't help. I called Dale back and he gave me a number for Jo Anne Kay who lives near the old Rudolph place. I followed up over the weekend.

Leaving a voice message for Jo Anne on Saturday, I heard back via text from her on Sunday inviting us to come to her home that afternoon and she and her husband, Terry Kay, would take us to the Rudolph Family Cemetery near their home.

<sup>1</sup>Haden/Hayden Cemetery, the spelling changed over the years.

<sup>2</sup>From FindAGrave.com: Carl Rudolph, b. 27 Sep 1891, Scotia, Greeley County, Nebraska; d. 29 Nov 1956 (aged 65), Teton, Fremont County, Idaho; Otto Franz Rudolph, b. 11 Feb 1886, d. 21 Jan 1943 (aged 56).



*Otto Franz Rudolph (1886-1943) with his wife  
Florence (1898-1947)*





*Greg Winters, Terry and JoAnn Kay*

After arriving we visited for a while learning that my great Aunt Ella Rudolph had married into Terry's family.<sup>3</sup> Terry inherited the farm from his father and they farm 1,100 acres up on the hills above Teton. Until recently they had about 90 head of milking cows also but now they have beef cattle. The Rudolph Family Cemetery (about 8 miles distant from the Haden/Hayden Cemetery) is not on property they own but they do farm it.

We got into our van and followed Jo Ann and Terry on 4 wheelers to an area closer to the cemetery. Then we boarded the 4 wheelers with them and road up the fields to an area where we walked for 10-15 minutes to the gravesite. Only my great-grandmother, one of her daughters and a grandson had head-

<sup>3</sup>Terry is descended from the Hill family which will be another research opportunity.

Rudolph Family Lineage		
Ann Amelia Begandt b. 1 Jan 1851 Berlin, Brandenburg, Germany d. 28 Oct 1903 Teton County, Idaho m. c. 1874 Germany Franz Fredrick Rudolph b. 22 Feb 1848 Leipzig, Saxony, Germany d. 22 Sep 1932 Teton County, Idaho		
Louise Rudolph b. 26 Sep 1880 Sioux City, Benton, Iowa d. 05 Sep 1942 San Francisco, California m. About 1911 Wayne E Jones b. 01 Sep 1870 Roseburg, Douglas, Oregon d. 22 Aug 1957 Orleans, Louisiana	Ella Martha Rudolph b. 17 Sep 1882 Scotia, Nebraska d. 27 Feb 1944 Alameda, California m. 20 Aug 1899 Madison, Idaho Emory Gilbert Adams b. 6 Oct 1870 Virginia d. 29 Jun 1958 Driggs, Teton, Idaho	Rosa Amelia Rudolph b. 27 April 1884 Scotia Greeley Nebraska d. 16 Jan 1970 Pocatello, Idaho m. 21 Jul 1906 William J. W. Hill b. 12 Oct 1886 Rexburg Idaho d. 24 Dec 1967 Pocatello Bannock, Idaho
Lois Katherine Jones b. 30 Aug 1916 Salt Lake City, Utah d. 23 Nov 2005 Eugene Oregon m. 11 Nov 1946 Andrew Bernard Larson b. 05 Dec 1905 Astoria, Oregon d. 31 May 1975 San Jose, California		
Andrea Lois Larson		



*Grave of Anne Begandt Rudolph (1851-1903), found at the Rudolph Family Cemetery*



*The view from the Rudolph Family homestead across the valley looking at the Grand Tetons.*



*The Rudolph Family: 1st row: Lena, great-grandmother Anne, Carl, great-grandfather Franz. 2nd row: Rose, Otto. 3rd row: Mary, Anna, my great grandmother Louise, Ella.*

stones there that we could find. Then we walked up to the old homestead where there were two broken down barns and the remains of a two room house, all overlooking the valley with the Grand Tetons in the eastern background. It was amazing and beautiful. A gorgeous day with blue skies and puffy clouds.

As I stood on the old homestead with its views of the valley and the far mountains I was in awe of the natural beauty. But to live there in the late 1800s must have been so difficult, especially with the harsh winters.

I wondered why the Rudolchs ever decided to leave Nebraska and move to such an isolated, though beautiful area.

Since our adventure, through FindAGrave.com, I have been in touch with my second cousin once removed who originally found the Rudolph cemetery in 2016 and named it. She told me my great-grandfather's grave is there but evidently well-covered with debris so we didn't see it. She also forwarded to me information about the five land grants my great-grandfather had on the land.

What an unexpected adventure we experienced. Our trip to Bozeman to explore, ride bikes and hike never really materialized and we never did get to Old Faithful. But we have some wonderful memories, lots of new information about my family and new friends including my "new" cousin.

---

*President's Message*  
*Continued from Page 3*

to these subscription websites for those of us who have Pleasanton Library card numbers. <https://www.cityofpleasantonca.gov/gov/depts/lib/online/genealogy.asp>

**Renewal of Dues**

I was reminded that not all L-AGS members may have noticed the opportunities to renew. There has been a link in the e-Bulletin. Just click on that and it will take you to the page on our web-

site. OR you can print out the last page of the November 2020 Root's Tracer and mail it in. Your membership of \$18.00 allows us the budget that we need to put on an awesome slate of speakers. For a single membership fee, that is a quality speaker for \$1.50/meeting. Such a deal!!! So if you have not renewed your membership yet, please do. It is a real bargain. Thank you so much.

*Julie Liu*

## The Missing Monument

By Shirley Siems Terry

Shortly after moving to California in 1966, I became interested in genealogy. On visits to our relatives in Oregon and letters to grandparents and relatives in Nebraska, I began filling in pedigree charts and family group sheets. But the Terry family all said to contact my husband's third cousin, Arta (Terry) Blonshine, who lived in Florida as she already "had everything". The common ancestors were Admoral Ansel Terry 1797-1884 and Elizabeth Foster 1798-1845 both born in Kentucky. Their five sons were born in Ohio and Indiana before the Terry family and others emigrated in 1841 by wagon train to Daviess County, Missouri.

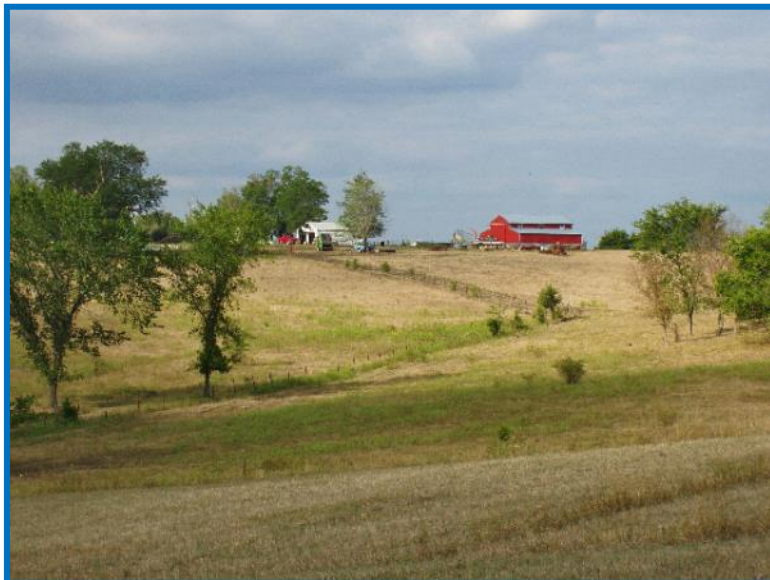
Arta and I worked well together. She visited Nebraska and Missouri relatives, cemeteries and courthouses whereas I had access to the California interlibrary loan services, the Oakland Family History Center, the San Bruno Archives and several genealogical libraries in the Bay Area including Sutro Library. We then moved to southern California and I visited the Los Angeles Public Library and the

San Mateo FHC and joined my first genealogical society. I sent Arta the typed copies of censuses and other finds including the abstract of a will proving Ansel Terry's grandfather as John Terry of early Cincinnati, Ohio.

Among the things she sent me were pictures taken of Terry tombstones in McClary Cemetery begun in 1845 with family burials on Ansel's farm in Daviess County, Missouri. Ansel and Elizabeth Terry's joint tombstone was an obelisk with their information on opposite sides. She braved high weeds and snakes to walk across a field to photograph this tombstone and the remains of Ansel's log house. Ansel Terry deeded over the land now known as McClary Cemetery on 18 June 1880 after Samuel McClary's three children and wife

<sup>1</sup>Daviess County, Missouri was organized December 29, 1836

<sup>2</sup>The Sutro Library is located on the 5th floor of the J. Paul Leonard Library, San Francisco State University



*House and barn taken from cemetery showing distance from road.*



*Elizabeth Terry tombstone in McClary Cemetery*



*Ansel & Elizabeth Terry, original stone.*

had died within three years. This was only a few years before both Samuel and Ansel's deaths. We think that McClary was either renting the farm from Ansel and/or attending church services in the Baptist church just across the road where only a historical marker now stands.

In 2003, I learned of a MyFamily.com website (shut down by Ancestry in 2014) of Terry relatives still in Daviess County. My husband had retired so we drove our RV across country to meet a dozen or more of these cousins at a restaurant. That prompted a larger Terry Family Reunion the next year at the Old Scot-

land Church and Cemetery near Jameson, Daviess County, Missouri where many of my husband's, Terry, Dinnel, Stretch and Hammon relatives are buried. We went again the following year for the 150<sup>th</sup> anniversary of that little rural Church of Christ that was still active and had a few Terry descendants as members. Wayne and I ended up visiting Daviess County for the fourth year in a row in 2006. On one of those trips, we visited and took tombstone pictures of ancestors and relatives in 24 cemeteries in Missouri, Nebraska and Kansas.

During our 2003 trip, we visited McClary Cemetery near Coffey, Missouri, to visit the graves of Wayne's 2<sup>nd</sup> great grandparents, Ansel & Elizabeth (Foster) Terry. We were lucky to find the farmers at home who allowed us to drive across their field to the cemetery. The obelisk tombstone was missing! I did some detective work and learned that another third cousin, Charles Terry, had visited a few years earlier and found some tombstones that had been knocked over by grazing cattle. He removed the obelisk which had been broken off its base and replaced it with a new stone for Ansel Terry but there was no stone for Elizabeth. He also paid for erecting a fence around the cemetery as pro-



*Elizabeth Foster Terry - new stone*

tection from the cattle. I found out that the old stone was taken 65 miles to the home of Charles' niece, Helen. When she was contacted by phone, she put us on hold and went out to her barn to verify Elizabeth really was on that stone. She then contacted Charles who promised to have a stone set for Elizabeth. Nine years later, another Terry descendant, Cathy Clark from Washington state, visited the cemetery in 2012 posting pictures including the new one for Elizabeth Terry verifying the promise was carried out. It is gratifying to know I was responsible for righting this wrong so descendants who visit this cemetery know that Ansel and Elizabeth are buried together.

The farmer has been very welcoming. I think he added the big farm gate into the cemetery. They are proud of the prairie grasses and wildflowers in the cemetery. They say the cemetery gets lots of visitors which is interesting because word is that Ansel Terry didn't want to be buried there because he didn't think anyone would ever visit his grave out in the middle of a field.

McClary Cemetery can be found at <https://www.findagrave.com/cemetery/2250441/mcclary-cemetery>

The cemetery plot list of about 60 burials between 1845 and 1917 can be found at [http://freepages.rootsweb.com/~sareid/genealogy/Transcriptions/McClary\\_Cemetery.htm](http://freepages.rootsweb.com/~sareid/genealogy/Transcriptions/McClary_Cemetery.htm)

<b>Terry Family Lineage</b>
John TERRY b. ca 1740 New Jersey d. 19 Jan 1795 Cincinnati, Hamilton, Ohio m. ca 1761 New Jersey Ruth HEATON b. ca 17 Nov 1743 New Jersey d. 1804 Delhi, Hamilton, Ohio
Robert TERRY b. 12 Aug 1771 New Jersey d. 17 Feb 1862 Ripley, Indiana m. 11 Jul 1792 Woodford, Kentucky Chloe WORLEY b. ca 1773 Boone, Kentucky d. 1822 Franklin, Indiana
Admoral Ansel TERRY b. 10 Aug 1797 Campbell, Kentucky d. 03 Jan 1884 Gallatin, Daviess, Missouri m. 30 Aug 1815 Hamilton, Ohio Elizabeth FOSTER b. 15 May 1798 Harrison, Kentucky d. 22 Aug 1845 Daviess, Missouri
Robert Jackson TERRY b. 10 Apr 1832 Franklin, Indiana d. 09 Dec 1897 Jameson, Daviess, Missouri m. 21 Apr 1864 Gallatin, Daviess, Missouri Susan Maria HAMMONS b. 10 Jun 1845 Johnson, Missouri d. 21 Sep 1932 Gallatin, Daviess, Missouri
Alva Ansel TERRY b. 21 Jan 1869 Daviess, Missouri d. 14 Mar 1932 Chase, Nebraska m. 21 Sep 1892 Hayes Center, Hayes, Nebraska Louella I. DINNELL b. 24 Jul 1872 Gallatin, Daviess, Missouri d. 15 Jan 1965 Imperial, Chase, Nebraska
Sylvester "Buck" Creed TERRY b. 16 Dec 1908 Chase, Nebraska d. 14 Nov 1992, Salem, Marion, Oregon m. 10 Nov 1928 Holyoke, Phillips, Colorado Carrie Etta FISHER b. 30 Jun 1910 Callaway, Custer, Nebraska d. 23 Dec 1973 Salem, Marion, Oregon
Sylvester Wayne TERRY 1938-2010 m. Shirley Jean Siems



*McClary Cemetery showing fence and gate.*

## Who Were These Business People?

By Richard W. Finn, Historian, City of Livermore

As the City of Livermore historian, I am sometimes asked about some of the great old buildings in town. One that attracts a lot of attention is 2062 First Street.

We found the Marx-Rosenthal Building started life in 1887 when contractor, A. J. Palmer, built this building as a general store with residence above for E. Fried. Fried did not stay in the building long. In May 1900 he sold it to Mrs. Lena Marx.

A company by the name of H. Marx & Company was in business in the building until March 1904. In May of that year C. E. Livermore leased the building for part of his grocery business. B. F. Pruitt, in December 1911, opened his Washington Market. In December 1913 H. C. Piles planned to open his dry goods store but we find that in January 1914 C. E. Sutton opened a sign painting business in the building. That did not last very long either because in May 1914 L. A. Leonhardt leased the building for another dry goods store. We are not sure that store ever opened because that same year the building was the home for Brown's Variety Store. In August 1920 S. Rosenthal opened his tailor shop and steam cleaning business. In 1928 Safeway came to town and leased the Marx-Rosenthal Building until the 1940s. A great deal of work has gone into restoring the facade to the original look. In recent years the building has housed a number of restaurants. Now it is the home of Plucked.

From a genealogical viewpoint I am always interested in who these people were. Where did they come from, did they have families, how long did they stay in town, do they have descendants here now? What were their full names? Sometimes it is fairly easy to figure out who these people were. We use online census records,<sup>1</sup> death records,<sup>2</sup> local church records, *Historic Resources Inventory City of Livermore*, Bunshah newspaper index, L-AGS website,<sup>3</sup> *Tri-Valley Directory of Historical*



*Marx Rosenthal Building*

*Resources and Places of Interest*,<sup>4</sup> local histories, etc.

A. J. Palmer was Capt. Andrew J Palmer (1834-1919), Civil War veteran; E. Fried was Eli Fried (1862-1931 – married 1886 to Lizzie Anspacher 1869-1915); Mrs. Lena Marx (Lena Schoenfeld

<sup>1</sup>Discover your family's story through historical records. [www.Familysearch.org](http://www.Familysearch.org)

<sup>2</sup>Livermore Public Library, Local History and Genealogy <https://www.cityoflivermore.net/citygov/lib/about/virtual/links/history.htm>

<sup>3</sup>Livermore-Amador Genealogical Society, Genealogy Data Records for Eastern Alameda County, California <http://www.l-ags.org/databases.html>

<sup>4</sup>Tri-Valley Directory Of Historical Resources And Places Of Interest <https://www.cityoflivermore.net/civicax/filebank/documents/6884>

1864-1933); H. Marx was the husband of Lena (Henri/Henry Marx 1857-1927), C. E. Livermore was Charles E. Livermore (1869-1950 - a grandson of rancher and town namesake Robert Thomas Livermore); B. F. Pruitt was Benjamin F. Pruitt (1858-1913); H. C. Piles was Hugh C. Piles (1866-1931) or his son Harry Calvin Piles (1890-1965); L. A. Leonhardt was Louis Adam Leonhardt (1863-1916); S. Rosenthal was Samuel Rosenthal (1891-1951). Some of them were very interesting people.

The last person we were able to figure out was C. E. Sutton. We are fairly sure it was sign painter Calvin Frank Sutton (1878-1923). We cannot prove that Calvin is the correct person but of all the Suttons in the early California census records it seems it could only be him. He has descendants in Solano and San Joaquin counties. We will try and contact them and see what they know about Calvin and a Livermore link.

## Catching the Genealogy “BUG”

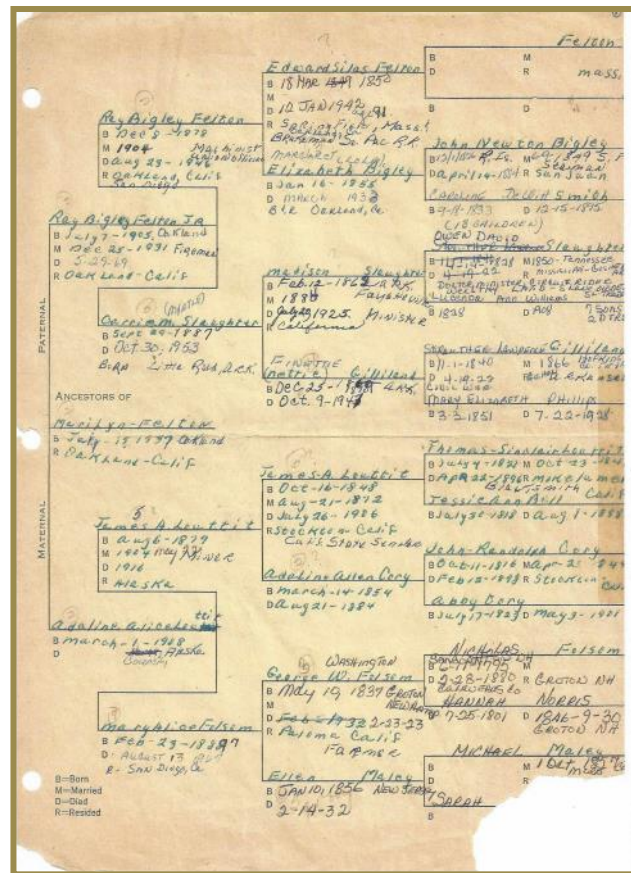
By Marilyn Felton Cutting

I grew up in East Oakland. Living nearby was Great-Aunt, Jessie Louttit Sloan, whom we visited on a regular basis. One Sunday afternoon, when I was 12 or 13 years of age, we paid a visit. Upon our arrival, she was sitting at a card table in the large living room busily writing down information about her family.

Let me tell you a bit about her family. She was the daughter of James Alexander, a U.S. Congressman, and Adaline Cory Louttit. Both the Louttit and Cory families lived in Stockton, California. James and Adaline had five children. The youngest, James Alexander, Jr., aka Lee, was my grandfather. As a young man Lee went to Council City, Alaska (near Nome) to seek his fortune in gold. That is another story. The other four children were all college educated. Jessie graduated from University of California, Berkeley and then enrolled in Stanford Lane Hospital Nursing School, which was located in San Francisco at that time. She was a member of the first graduating nursing school class.

Back to that Sunday afternoon in 1949 or 1950. Aunt Jessie told me to pull up a chair and then handed me a blank pedigree chart and some completed charts and suggested that I fill in the blanks, which I did. I folded it up and stuck it in a drawer. Aunt Jessie also told me that day that if I ever wanted to join the DAR, I would be qualified as we had ancestors who served in the American Revolution. In about the late 1990’s after retiring, I suddenly became interested in joining the DAR. I knew exactly where that pedigree chart was. I had gone through several moves and the paper was quite fragile, but still very readable.

So, the “seed” was planted all those years ago, but



Felton-Louttit Family Pedigree

I never forgot about that family pedigree chart which went back six generations.

In the last twenty years, I have done a lot of researching and exploring and now have volumes of information not just one piece of paper. It has been a great journey.

## *Future General Meetings - via Zoom*

**Zoom** is a web-based video conferencing tool.

Join the L-AGS meeting through a L-AGS email invite.

First time **Zoom** participants Learn How at YouTube.com:

<https://www.youtube.com/watch?v=9isp3qPeQ0E>

Visitors are always welcome.

Monday March 8, 7:00 p.m. - via **Zoom** - site opens 6:30 p.m.

*Susan Goss Johnston*    *Records Behind the WWI Draft Registrations*

Monday April 12, 7:00 p.m. - via **Zoom** - site opens 6:30 p.m.

*Gena Philibert-Ortega*    *10 Databases you didn't know were on Ancestry.com*

Monday May 10, 7:00 p.m. - via **Zoom** - site opens 6:30 p.m.

*Thomas MacEntee*    *Getting Ready for the 1950 US Census*

*The Livermore-Amador Genealogical Society is exempt from Federal Income Tax under Section 501(c)(3)(public charity) of the Internal Revenue Code and California Taxation Code 2301g.*

*Livermore-Amador Genealogical Society*

P.O. Box 901

Livermore, CA 94551-0901

Address Service Requested

**FIRST CLASS**